



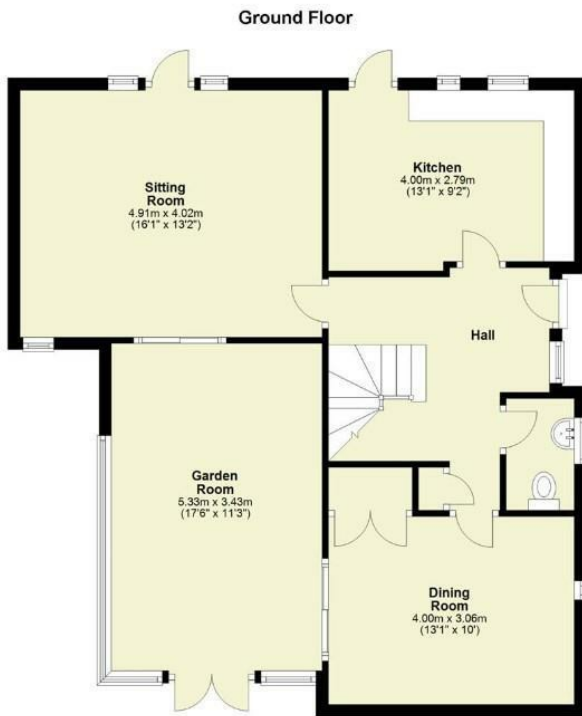
JAMIE WARNER
- ESTATE AGENTS -



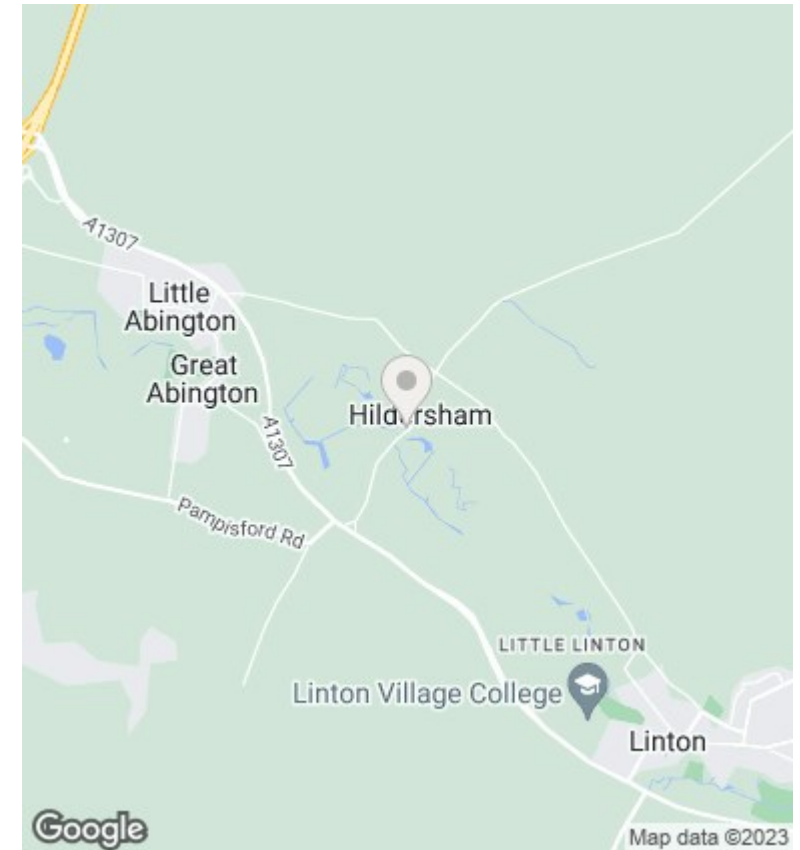
Woodside, High Street, Hildersham, Cambridge, CB21 6BU

Guide Price £500,000

- Two/Three Bedrooms
- Downstairs WC
- Garage & Driveway
- Three Reception Rooms
- First Floor Bathroom
- No Onward Chain
- Kitchen/Breakfast Room
- Private, Mature Gardens



Approx. gross internal floor area 138 sqm (1475 sqft)



Directions

Viewings

Viewings by arrangement only. Call 01440 712221 to make an appointment.

Council Tax Band

C

EPC Rating:

E

Energy Efficiency Rating		Current	Potential
<i>Very energy efficient - lower running costs</i>			
(92 plus)	A		
(81-91)	B		80
(69-80)	C		
(55-68)	D	52	
(39-54)	E		
(21-38)	F		
(1-20)	G		
<i>Not energy efficient - higher running costs</i>			
England & Wales		EU Directive 2002/91/EC	